

Dog and Cat Impounds in Santa Cruz County

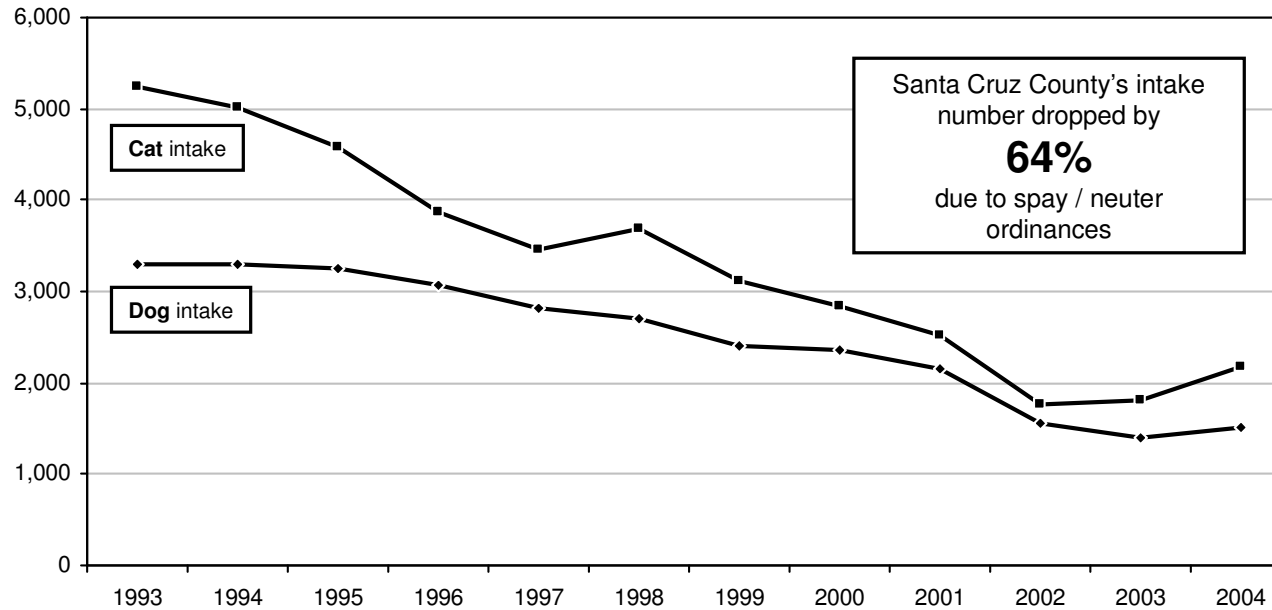
January 29, 2007



CALIFORNIA HEALTHY PETS ACT
www.cahealthypets.com
judie@cahealthypets.com

In the mid 1990's the County of Santa Cruz implemented a mandatory spay and neuter ordinance in effort to reduce the high number of animals its shelters took in each year.

Santa Cruz County – Animal Shelter Intake



	1993	1994	1995	1996	1997	1998	1999	2000	2001	2002	2003	2004
Dogs entering Santa Cruz shelters	3,293	3,309	3,247	3,070	2,817	2,693	2,415	2,359	2,162	1,546	1,403	1,503
Percent of dogs entering shelter euthanized	30%	30%	28%	27%	20%	20%	18%	19%	16%	14%	16%	17%
Dogs euthanized per 1,000 residents	4.9	4.9	4.4	4.0	2.7	2.5	2.0	2.1	1.6	1.0	1.0	1.2
Cats entering Santa Cruz shelters	5,245	5,016	4,578	3,861	3,451	3,682	3,113	2,830	2,511	1,769	1,805	2,165
Percent of cats entering shelter euthanized	62%	60%	59%	52%	48%	41%	37%	36%	37%	31%	45%	49%
Cats euthanized per 1,000 residents	16.3	14.8	13.2	9.8	8.0	7.3	5.5	4.8	4.4	2.5	3.8	4.9

Note: Service for the City of Watsonville (pop 50,000) was established late in 2004.
 During the entire service period, the City of Capitola (pop 10,000) had not adopted the provisions of the County S/N ordinance.
 Total service area population from 1993 to 2004 grew from 200,850 to 211,000 people.